

Performance Curves for the 420 Series

MODEL/SIZE	R.P.M.	CATALOG PAGE	PDF PAGE
2 x 2-1/2 x 12A	3500/1750	401	2
2 x 2-1/2 x 12B	1750	402	3
2-1/2 x 3 x 12A	3500/1750	403	4
2-1/2 x 3 x 12A	1150	404	5
3 x 4 x 14A	1750/1150	405	6
3 x 4 x 14B	1750	406	7
4 x 5 x 15	1750/1150	407	8
5 x 5 x 12	3550	408	9
5 x 6 x 15	1750	408.1	10
6 x 6 x 12	3550	408.2	11
6 x 8 x 17A	1750	409	12
6 x 8 x 17B	1750/1150	410	13

2 x 2-1/2 x 12A SERIES 420

ENCLOSED IMPELLER

Section **420** Page **401**

Date **January 2001**

Supersedes Section 420 Page 401

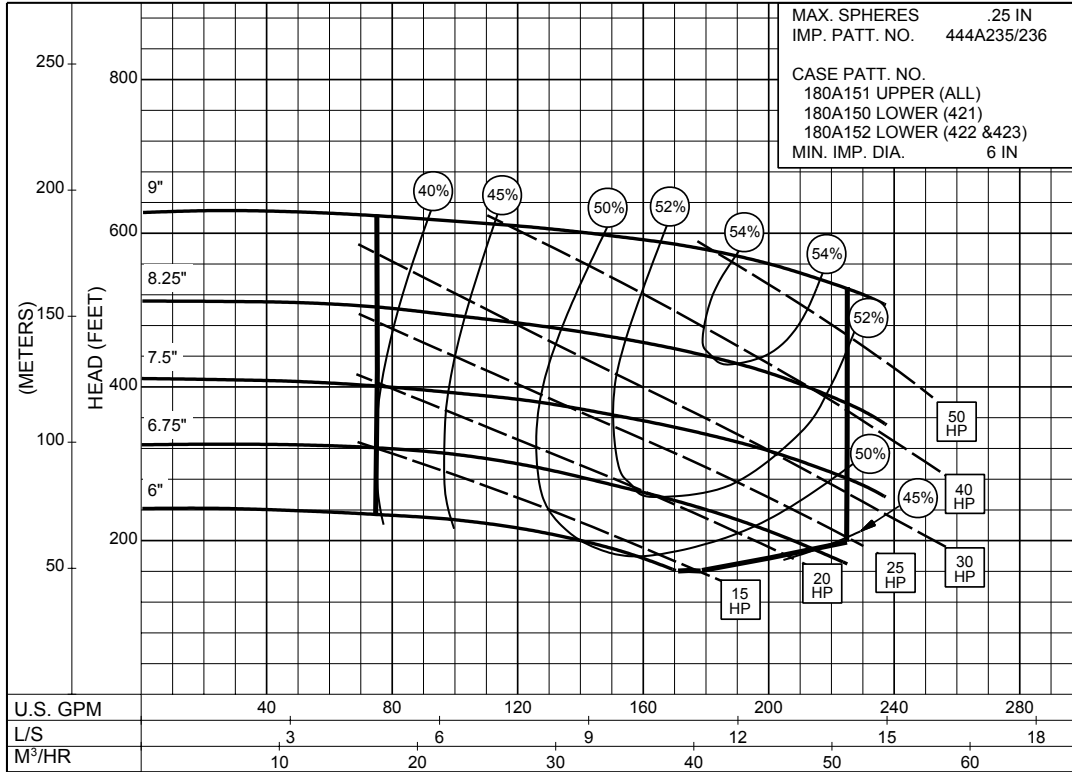
Dated January 1968

SIZE : 2x2-1/2x12A

TYPE : 420

IMPELLER : Enclosed

R. P. M. : 3500



3500
R.P.M

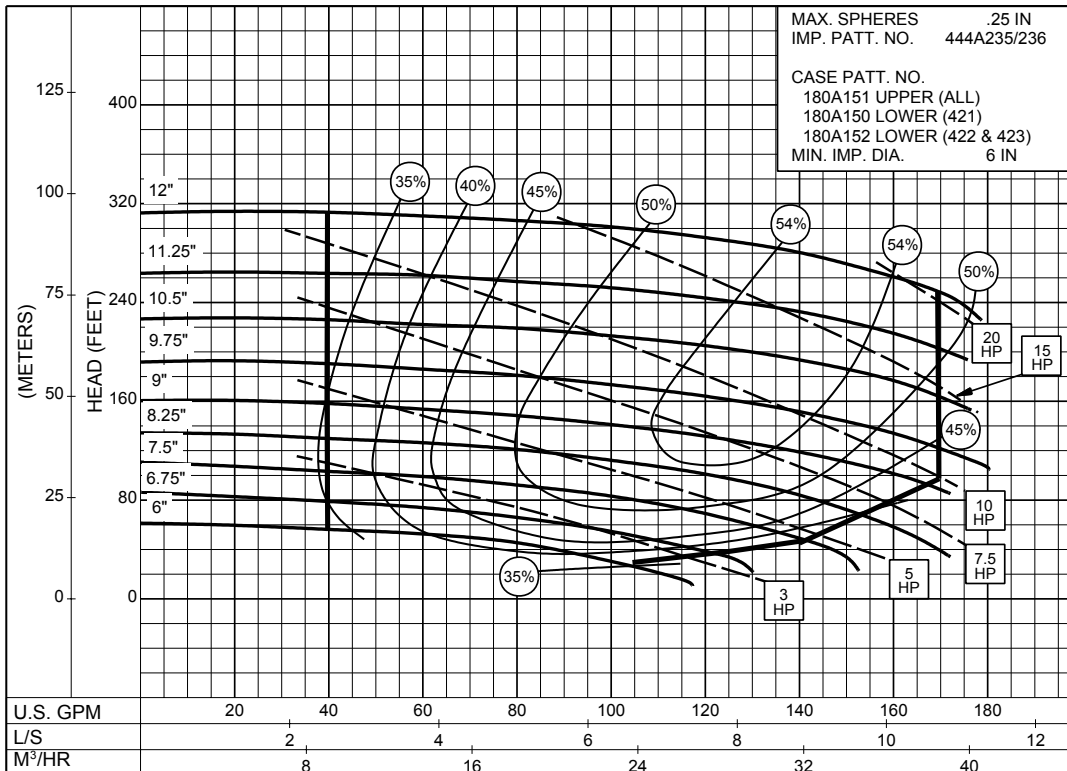
1PC-115893

SIZE : 2x2-1/2x12A

TYPE : 420

IMPELLER : Enclosed

R. P. M. : 1750



1750
R.P.M

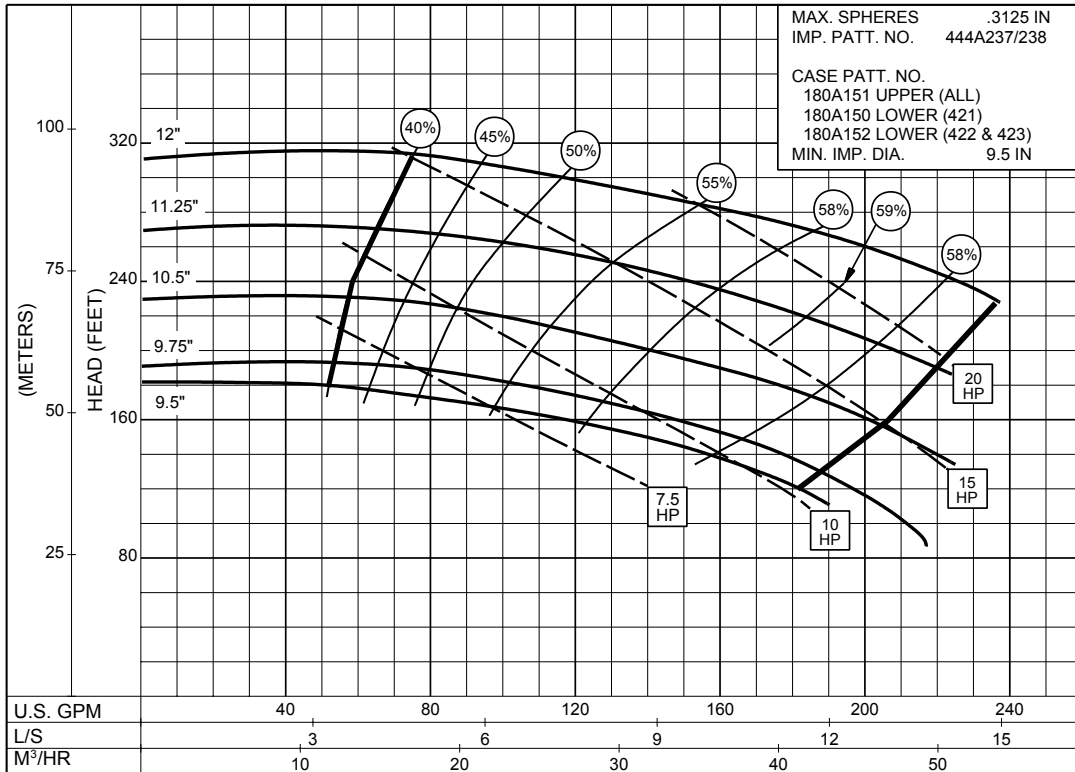
1PC-115894

ENCLOSED IMPELLER

Supersedes Section 420 Page 402
 Dated January 1968

SIZE : 2x2-1/2x12B TYPE : 420 IMPELLER : Enclosed R. P. M. : 1750

MAX. SPHERES .3125 IN
 IMP. PATT. NO. 444A237/238
 CASE PATT. NO.
 180A151 UPPER (ALL)
 180A150 LOWER (421)
 180A152 LOWER (422 & 423)
 MIN. IMP. DIA. 9.5 IN



**1750
R.P.M**

1PC-115895

ENCLOSED IMPELLER

Date **January 2001**

Supersedes Section 420 Page 403

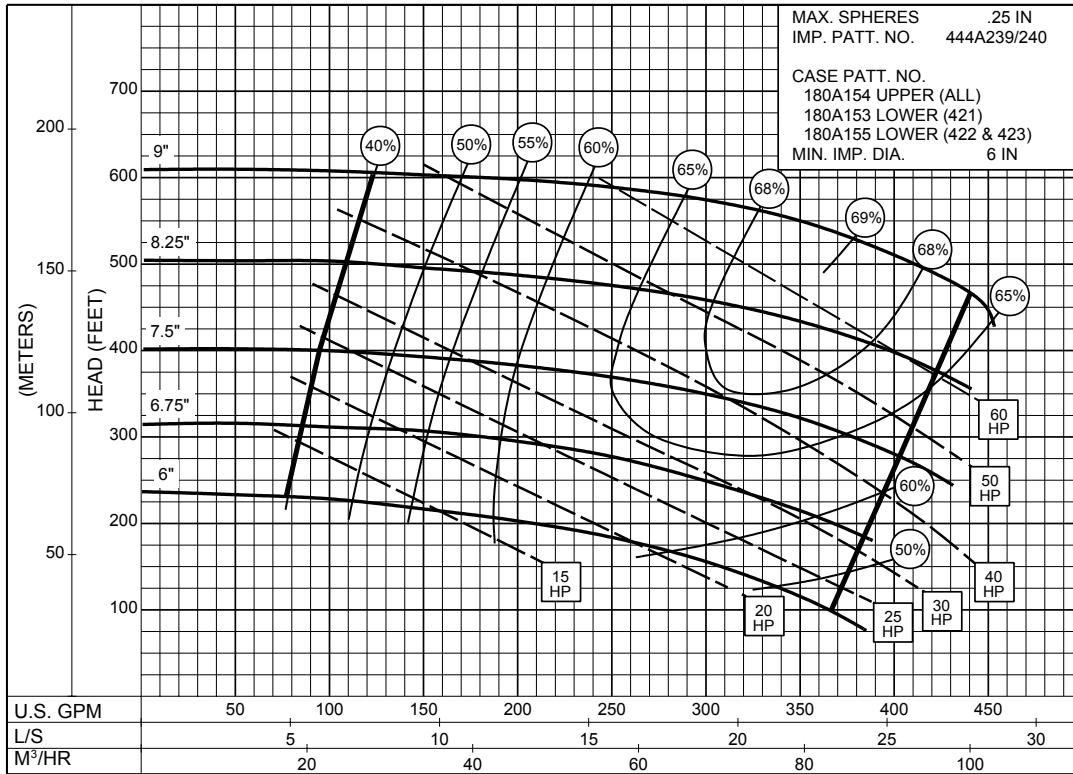
Dated January 1968

SIZE : 2-1/2x3x12A

TYPE : 420

IMPELLER : Enclosed

R. P. M. : 3500



3500
R.P.M

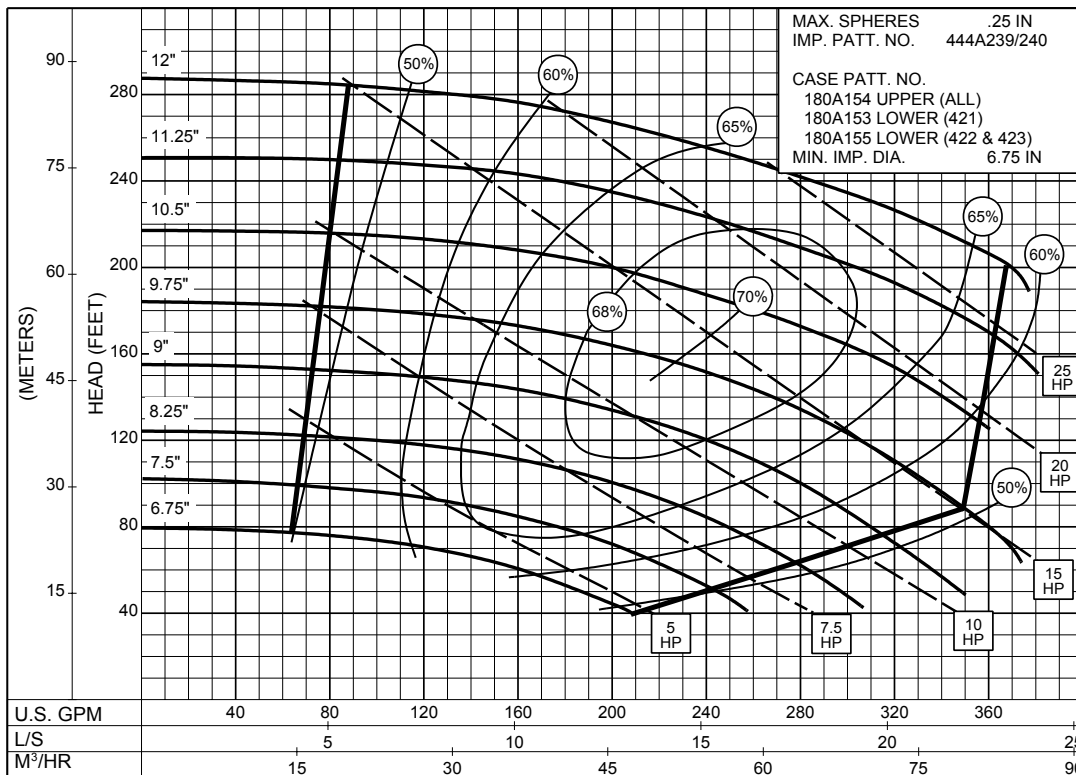
1PC-115896

SIZE : 2-1/2x3x12A

TYPE : 420

IMPELLER : Enclosed

R. P. M. : 1750



1750
R.P.M

1PC-115897

ENCLOSED IMPELLER

Supersedes Section 420 Page 404

Dated January 1968

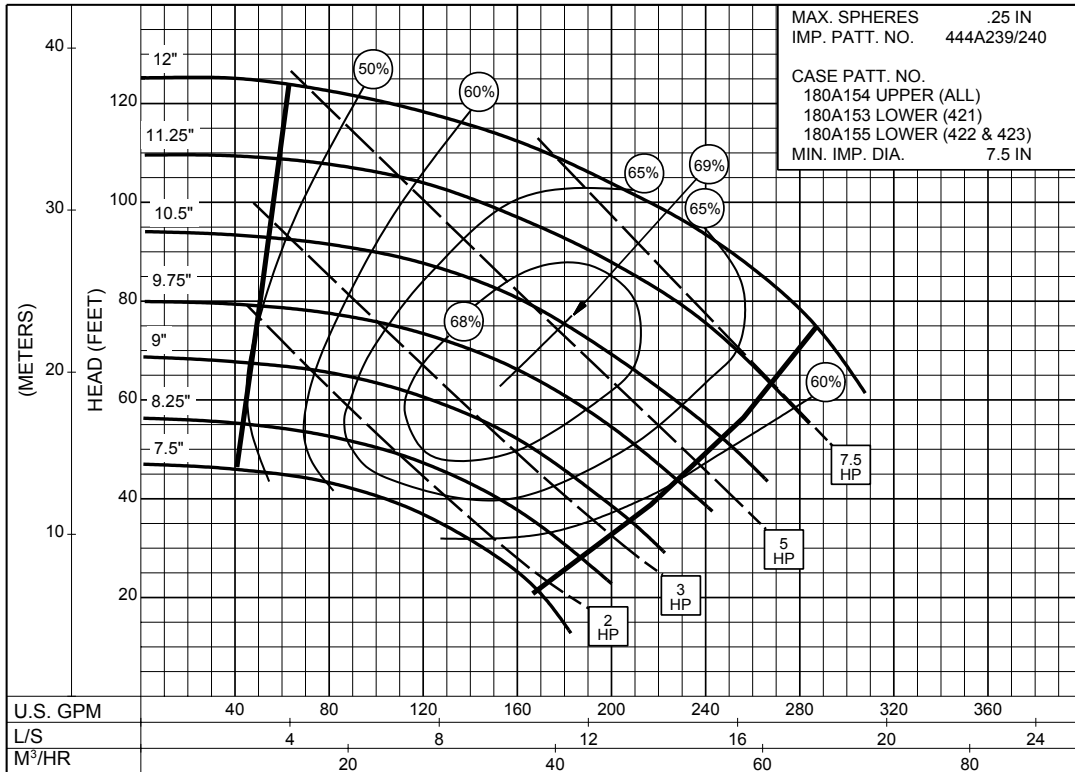
SIZE : 2-1/2x3x12A

TYPE : 420

IMPELLER : Enclosed

R. P. M. : 1150

MAX. SPHERES .25 IN
 IMP. PATT. NO. 444A239/240
 CASE PATT. NO.
 180A154 UPPER (ALL)
 180A153 LOWER (421)
 180A155 LOWER (422 & 423)
 MIN. IMP. DIA. 7.5 IN



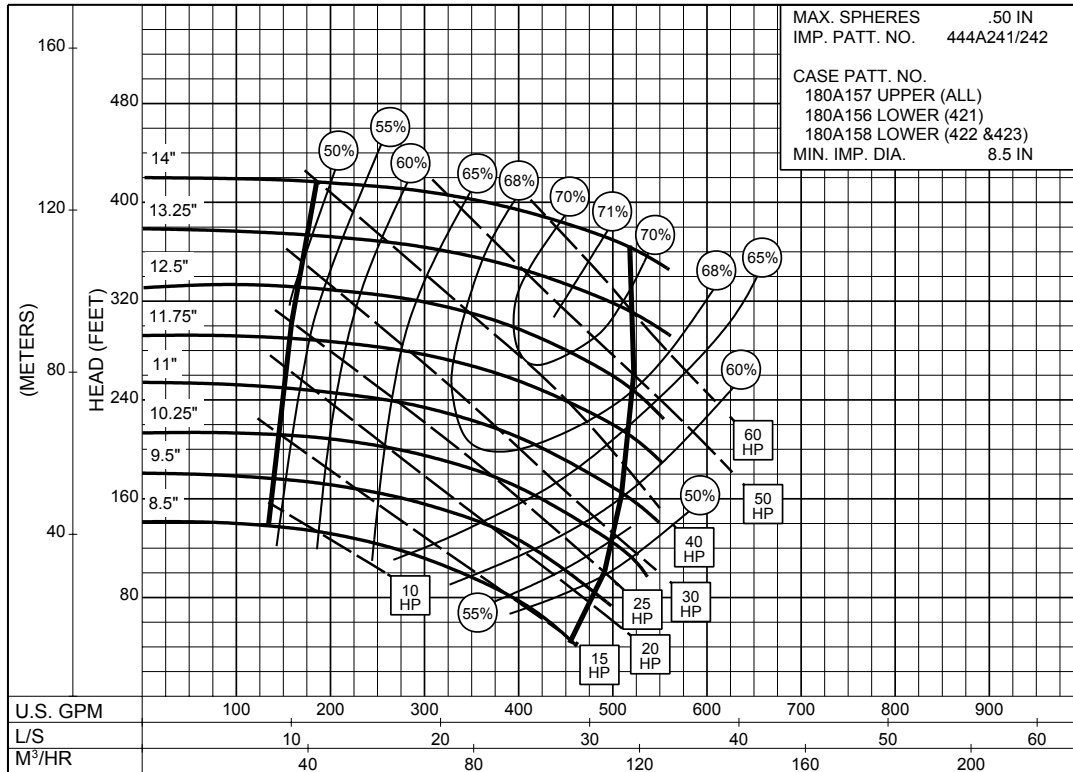
**1150
R.P.M**

1PC-115898

3 x 4 x 14A SERIES 420

ENCLOSED IMPELLER

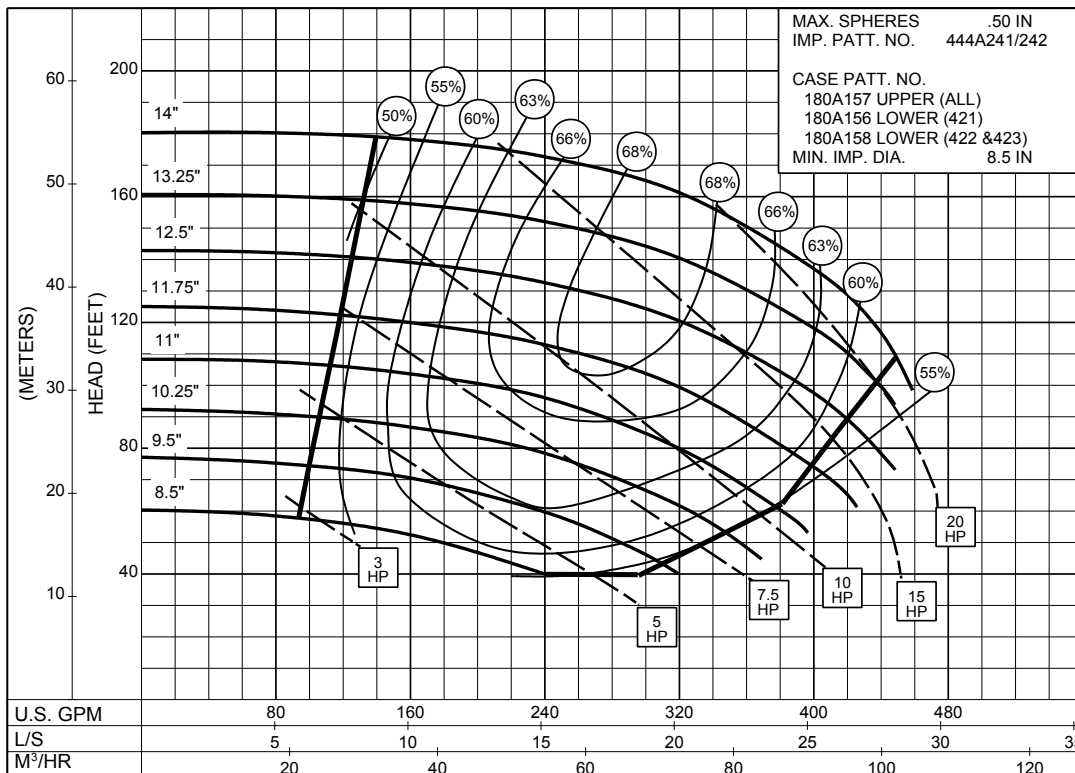
SIZE : 3x4x14A TYPE : 420 IMPELLER : Enclosed R. P. M. : 1750



1PC-115899

1750
R.P.M

SIZE : 3x4x14A TYPE : 420 IMPELLER : Enclosed R. P. M. : 1150



1PC-115900

1150
R.P.M

Supersedes Section 420 Page 406
 Dated July 1971

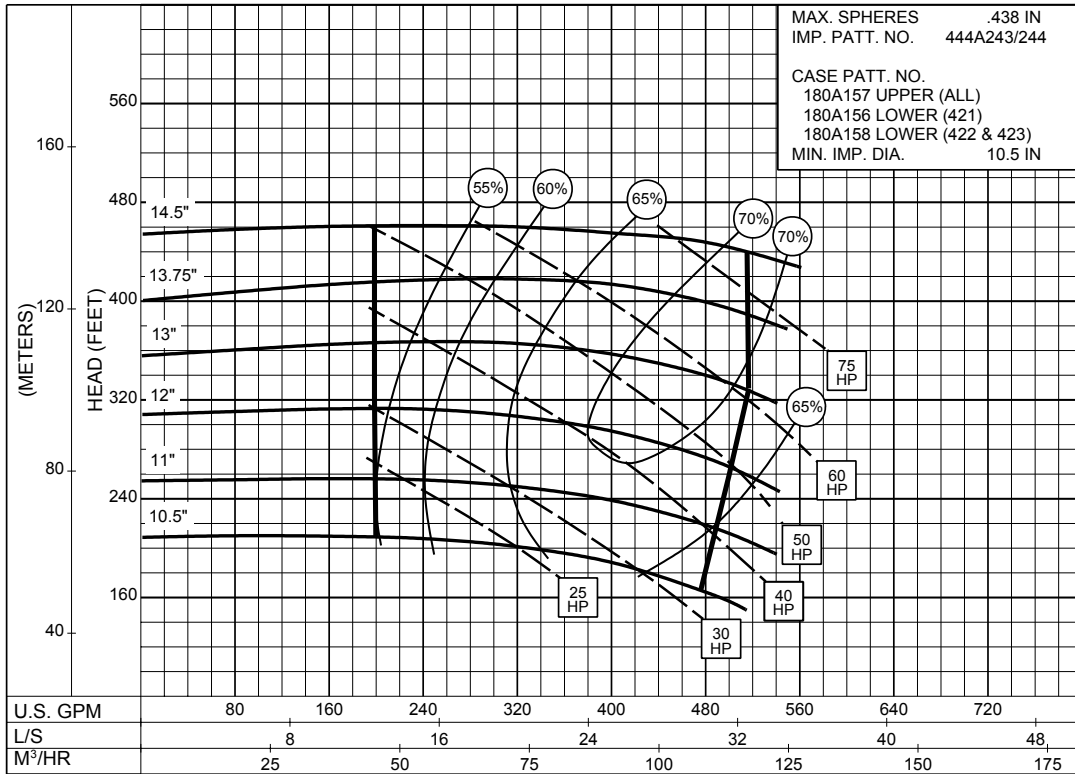
SIZE : 3x4x14B

TYPE : 420

IMPELLER : Enclosed

R. P. M. : 1750

MAX. SPHERES .438 IN
 IMP. PATT. NO. 444A243/244
 CASE PATT. NO.
 180A157 UPPER (ALL)
 180A156 LOWER (421)
 180A158 LOWER (422 & 423)
 MIN. IMP. DIA. 10.5 IN



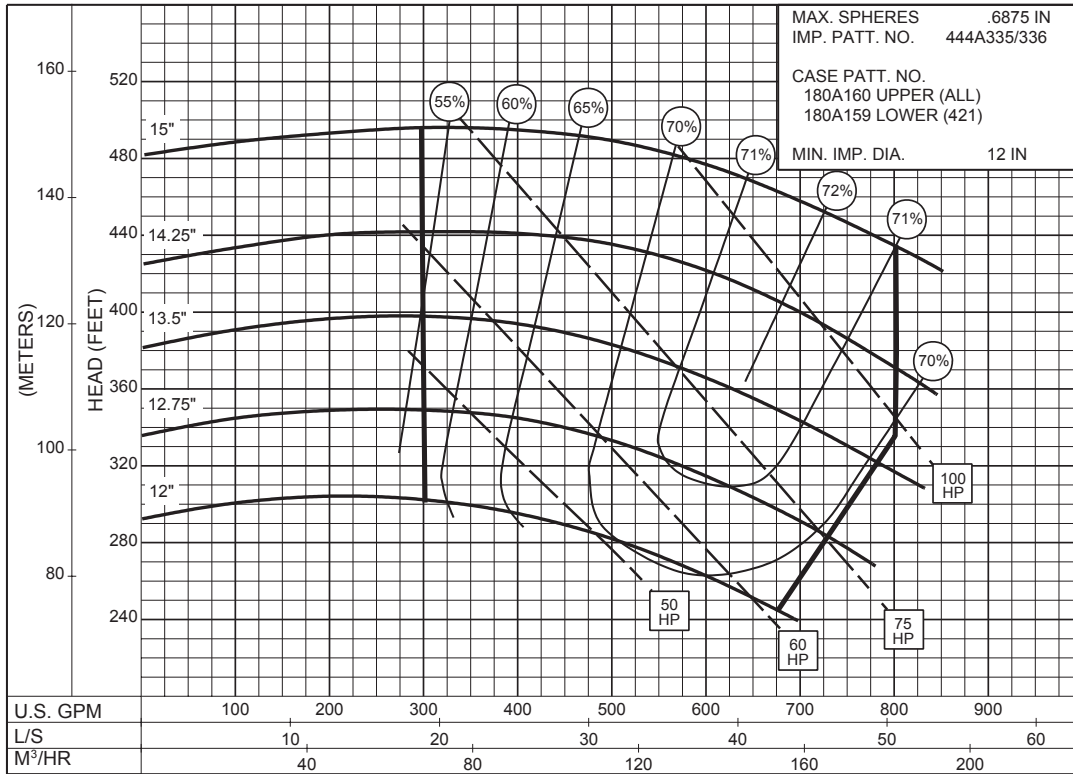
1PC-118277

**1750
R.P.M**

4 x 5 x 15 SERIES 420

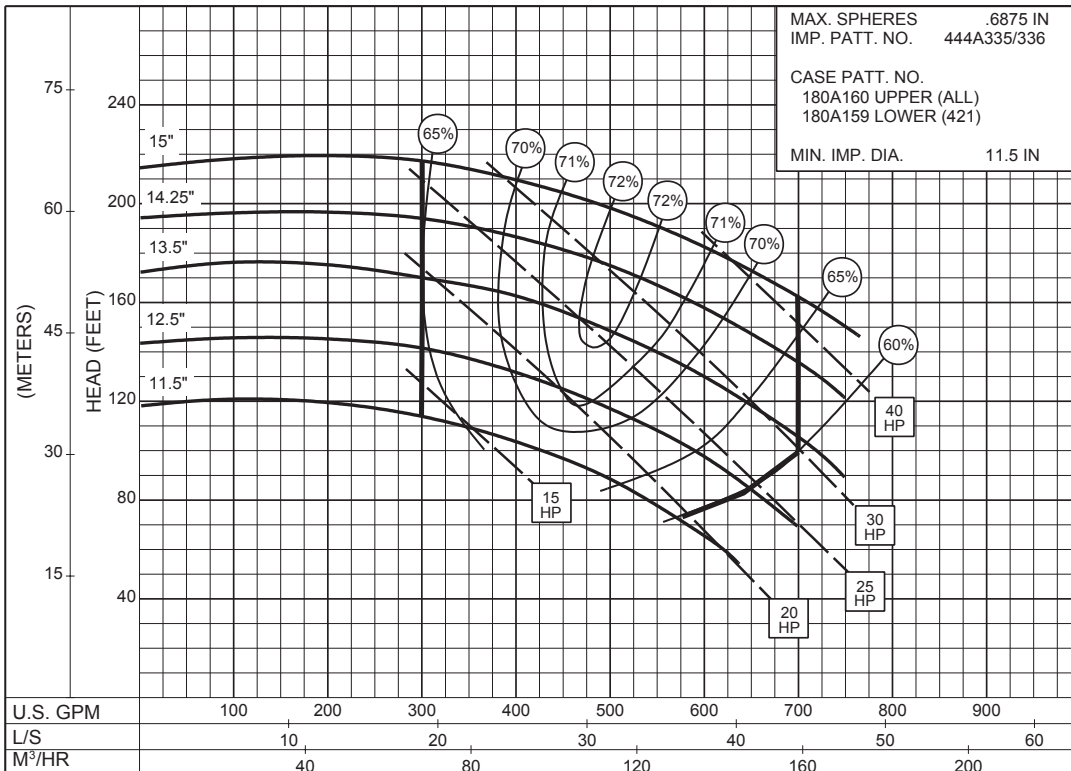
ENCLOSED IMPELLER

SIZE : 4x5x15 TYPE : 420 IMPELLER : Enclosed R. P. M. : 1750



1PC-115902

SIZE : 4x5x15 TYPE : 420 IMPELLER : Enclosed R. P. M. : 1150



1PC-115903

5 x 5 x 12 SERIES 420

ENCLOSED IMPELLER

SIZE : 5x5x12

TYPE : 420

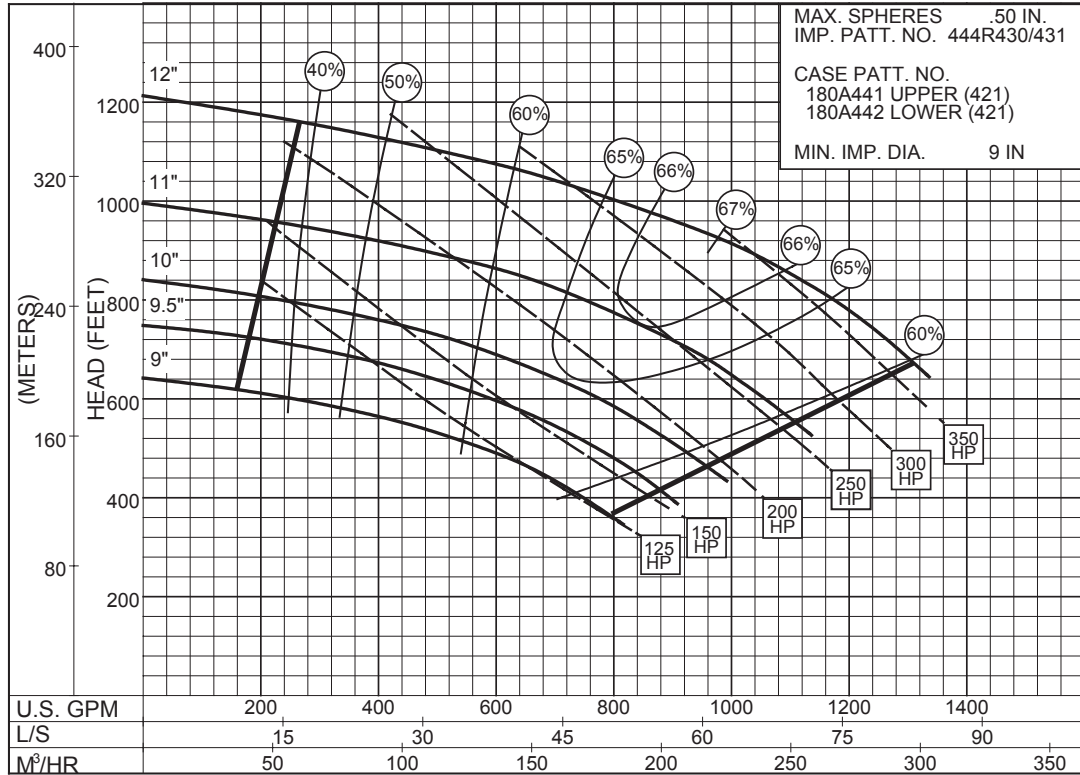
IMPELLER : Enclosed

R. P. M. : 3550

MAX. SPHERES .50 IN.
IMP. PATT. NO. 444R430/431

CASE PATT. NO.
180A441 UPPER (421)
180A442 LOWER (421)

MIN. IMP. DIA. 9 IN



3550
R.P.M

PC-175888

5 x 6 x 15 SERIES 420

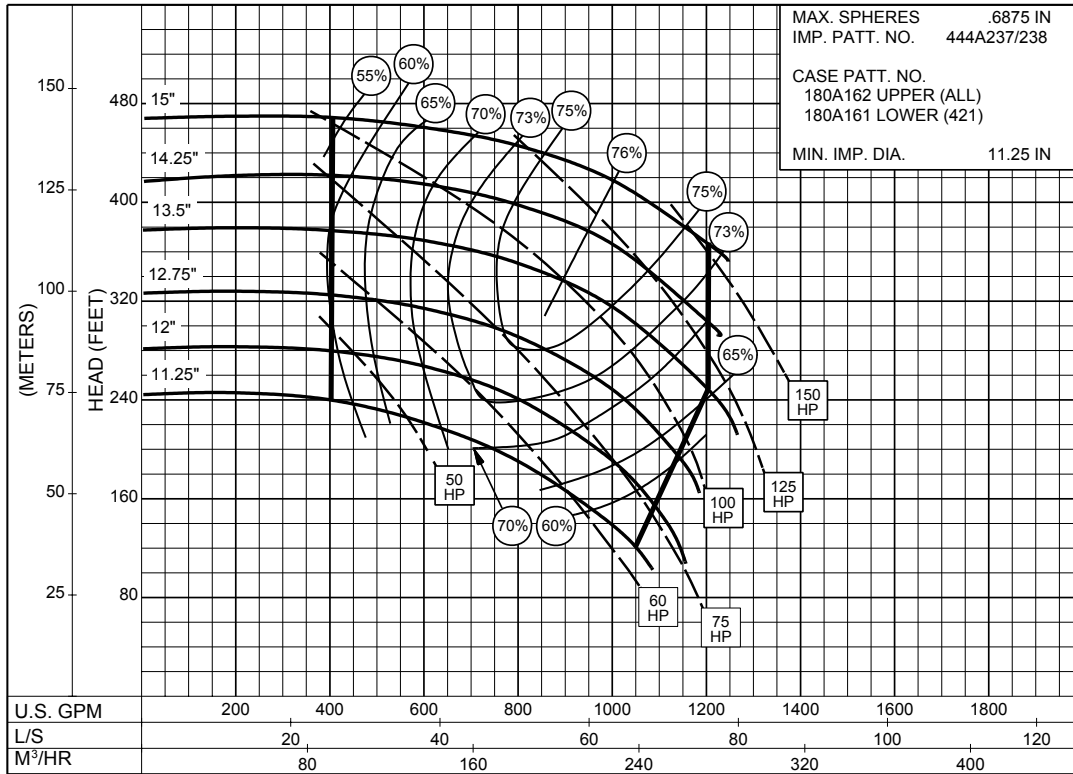
ENCLOSED IMPELLER

SIZE : 5x6x15

TYPE : 420

IMPELLER : Enclosed

R. P. M. : 1750



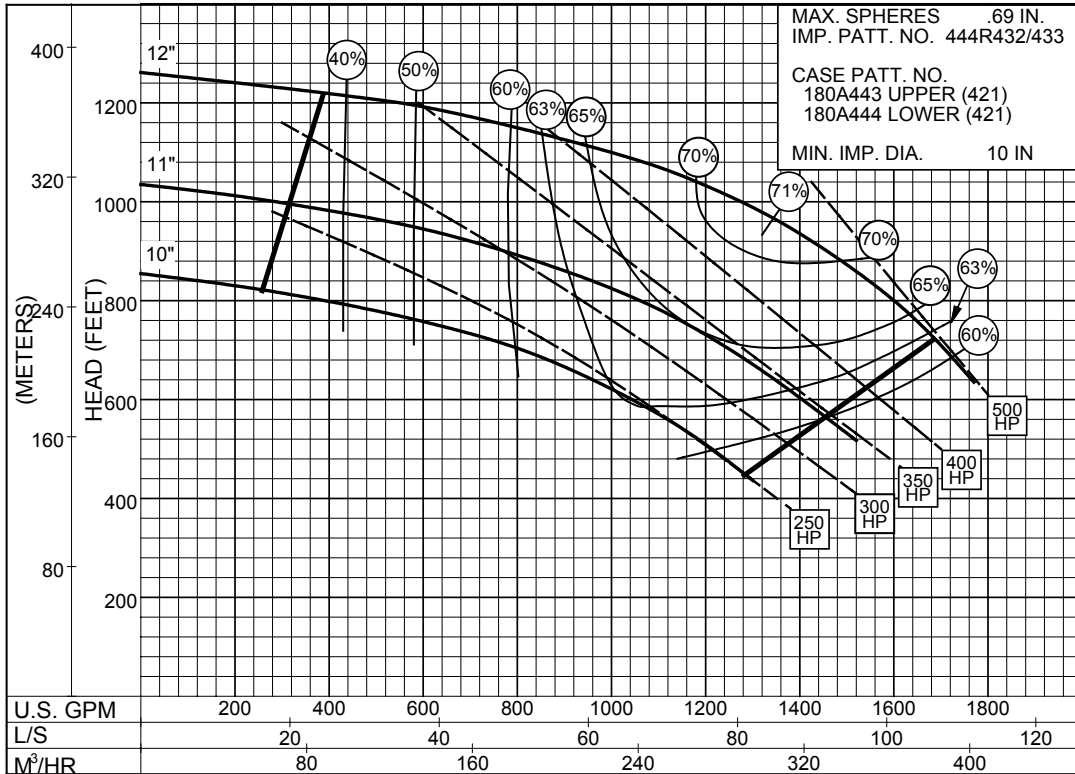
1750
R.P.M

1PC-115904

6 x 6 x 12 SERIES 420

ENCLOSED IMPELLER

SIZE : 6x6x12 TYPE : 420 IMPELLER : Enclosed R. P. M. : 3550



PC-175890

3550
R.P.M

6 x 8 x 17A SERIES 420

ENCLOSED IMPELLER

Section **420** Page **409**

Date **January 2001**

Supersedes Section 420 Page 409

Dated January 1968

SIZE : 6x8x17A

TYPE : 420

IMPELLER : Enclosed

R. P. M. : 1750

