

**HYDROMATIC®**  
ENGINEERED PRODUCTS

# H SERIES



Submersible  
**NON-CLOG**  
Wastewater  
**PUMPS**

---

**H4H, H4HX, H3H,  
H3HX, H4Q, H4QX**



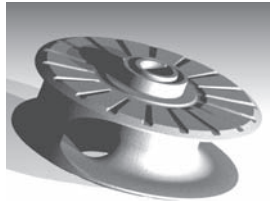
**HYDROMATIC®**  
ENGINEERED PRODUCTS

# H SERIES

## NO CLOG - NO LOSS

### Dependable HYDROMATIC® submersible non-clog pumps

In our continuing tradition of excellence, Hydromatic has developed the H Series line of No Clog-No Loss submersible pumps. The enhanced performance of the H Series pumps is made possible by employing an improved mono-vane impeller geometry. This superior geometry helps to eliminate clogs while not affecting performance. H Series pumps yield steeper, non-overloading performance and improved efficiencies.

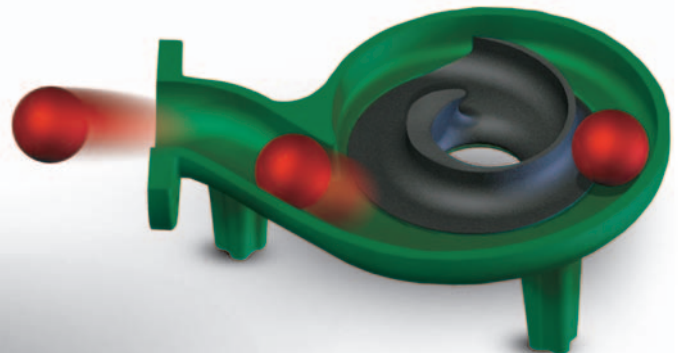


### Can your pump pass this?



Hydromatic is one of the oldest manufacturers of submersible pumps in the world. Years of engineering improvements, real world field applications, and experience have solidified Hydromatic as the premier brand on the market today. Dependable Hydromatic pumps provide years of reliable service.

Complete technical support and ongoing engineering assistance plus an available 5-year warranty ensures peace of mind for users of Hydromatic pumps.

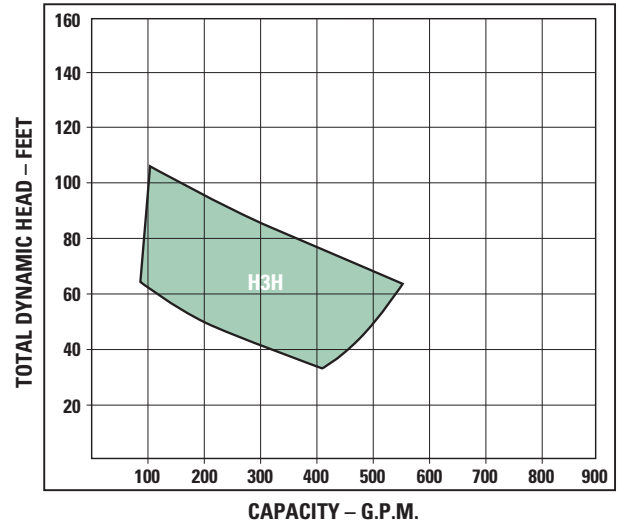


**H Series pumps pass a full 3" diameter nondeformable spherical solid per the Ten States Standards**

# Submersible Non-clog Wastewater Pumps

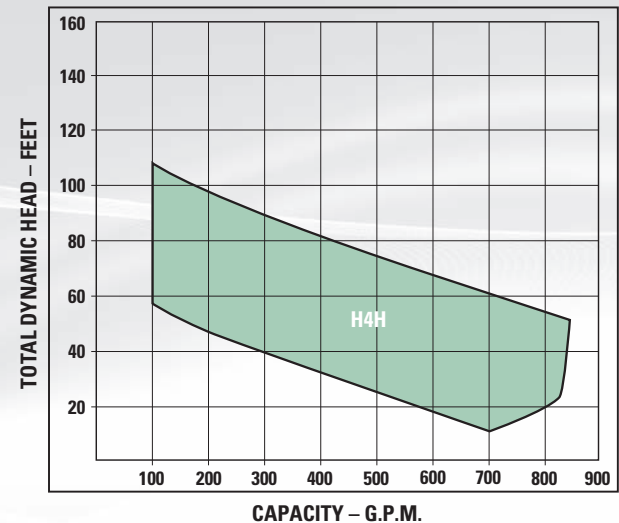
## H3H, H3HX NON-CLOG

- 3" discharge
- Passes a full 3" diameter nondeformable spherical solid per the Ten States Standards
- Performance
  - Steep non-overloading curve
  - Flows to 575 GPM, heads to 105 ft.
  - Highly efficient
- Design that will not clog
  - Streamlined impeller vane at inlet
  - Smooth flow path
- Can easily be converted to an H4H pump to meet future lift station demands



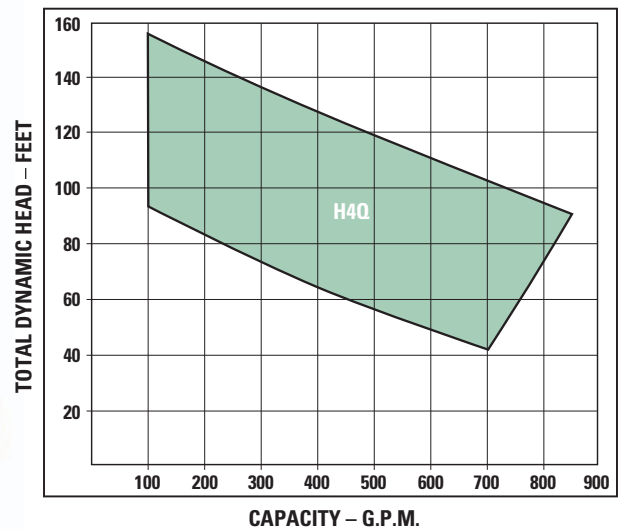
## H4H, H4HX NON-CLOG

- 4" discharge
- Passes a full 3" diameter nondeformable spherical solid per the Ten States Standards
- Performance
  - Steep non-overloading curve
  - Flows to 850 GPM, heads to 105 ft.
  - Highly efficient
- Design that will not clog
  - Streamlined impeller vane at inlet
  - Smooth flow path
- H4H wet end can be retrofitted to Hydromatic S4P motor end



## H4Q, H4QX NON-CLOG

- 4" discharge
- Passes a full 3" diameter nondeformable spherical solid per the Ten States Standards
- Performance
  - Steep non-overloading curve
  - Flows to 800 GPM, heads to 145 ft.
  - Highly efficient
- Design that will not clog
  - Streamlined impeller vane at inlet
  - Smooth flow path
- Integrated pump-out vanes
  - Keeps seal area clear of debris
  - Balances pressure distribution
  - Provides material for integrated balancing-



## WARRANTY

Hydromatic® warrants to the original purchaser of each Hydromatic product(s) that any part thereof that proves to be defective in material or workmanship within one year from date of installation or 18 months from manufacture date, whichever comes first, will be replaced at no charge with a new or remanufactured part, F.O.B. factory. Purchaser shall assume all responsibility and expense from removal, reinstallation and freight. Any item(s) designated as manufactured by others shall be covered only by the express warranty of the manufacturer thereof. This warranty does not apply to damage resulting from accident, alteration, design, misuse or abuse. The pump must be installed, operated and maintained in accordance with the published instructions of the appropriate Installation & Service Manual.

All dual seal non-clogs and 3-5 HP grinders must have seal failure and heat sensors attached and functional for Warranty to be in effect. If a seal failure should occur, Hydromatic will cover only the lower seal and labor thereof. Labor is based on Authorized Service Center contract allowance. If the heat sensor is not attached and functional, Warranty is void. If the seal failure sensor is not attached and functional, Warranty is void.

If the material furnished to the Buyer shall fail to conform to this contract or to any of the terms of this written warranty, Hydromatic shall replace such nonconforming material at the original point of delivery and shall furnish instruction for its disposition. Any transportation charges involved in such disposition shall be for the Buyer's account. The Buyer's exclusive and sole remedy on account or in respect of the furnishing of material that does not conform to this contract or to this written warranty, shall be to secure replacement thereof as aforesaid. Hydromatic shall not in any event be liable for the cost of any labor expended on any such material or for any incidental or consequential damages to anyone by reason of the fact that such material does not conform to this contract or to this written warranty.

ALL IMPLIED WARRANTIES, INCLUDING THE IMPLIED WARRANTY OF MERCHANTABILITY AND THE IMPLIED WARRANTY OF FITNESS FOR A PARTICULAR PURPOSE, ARE DISCLAIMED TO THE SAME EXTENT AS THE EXPRESS WARRANTY CONTAINED HEREIN. Some states do not allow limitations on how long an implied warranty lasts, so the above limitation may not apply to you.

MANUFACTURER EXPRESSLY DISCLAIMS AND EXCLUDES ANY LIABILITY FOR CONSEQUENTIAL OR INCIDENTAL DAMAGES FOR BREACH OF ANY EXPRESS OR IMPLIED WARRANTY ARISING IN CONNECTION WITH THIS PRODUCT, INCLUDING WITHOUT LIMITATION, WHETHER IN TORT, NEGLIGENCE, STRICT LIABILITY CONTRACT OR OTHERWISE. Some states do not allow the exclusion or limitation of incidental or consequential damages, so the above limitation or exclusion may not apply to you. This warranty gives you specific legal rights, and you may also have other rights which vary from state to state.

**Note: Hydromatic reserves the right to make revisions to its products and their specifications, this catalog and related information without notice. Most models are UL Listed and/or CSA Approved.**



**HYDRAMATIC®**  
ENGINEERED PRODUCTS

USA

740 East 9th Street, Ashland, Ohio 44805  
Tel: 419-289-3042 Fax: 419-281-4087

[www.hydraulic.com](http://www.hydraulic.com)

- Your Authorized Local Distributor -

CANADA

269 Trillium Drive, Kitchener, Ontario, Canada N2G 4W5  
Tel: 519-896-2163 Fax: 519-896-6337